

PENKO ENGINEERING B.V.

The engine behind



Product Catalogue



When WEIGHING Counts

“Weights and measures may be ranked among the necessities of life to every individual of human society. They enter into the economical arrangements and daily concerns of every family. They are necessary to every occupation of human industry; to the distribution and security of every species of property; to every transaction of trade and commerce; to the labors of the husbandman; to the ingenuity of the artificer; to the studies of the philosopher; to the researches of the antiquarian; to the navigation of the mariner, and the marches of the soldier; to all the exchanges of peace, and all the operations of war. The knowledge of them, as in established use, is among the first elements of education, and is often learned by those who learn nothing else, not even to read and write. This knowledge is riveted in the memory by the habitual application of it to the employments of men throughout life.”

JOHN QUINCY ADAMS - Report to the US Congress, 1821

Contents

FLEX Range	6
REMOTE I/O Devices	8
FLEX2100	10
Compact Instruments	12
FORCE Instruments	14
SGM Digitizer Range	16
EU-800d Indicator	18
Load Cells, Mounts & Assemblies	20
Load Cell Accessories	22
Platforms	24
Software	26
Experienced Research & Development	28
Certifications	30
Dealer Network	31



Weighing by PENKO

The basic and most reliable measuring method to warrant accuracy and consistency in a process is indisputably defined by weight regardless of whether the product is a liquid, a solid mass, granules, a powder or a gas.

At PENKO Engineering B.V. we specialize in developing, manufacturing and commissioning weighing and dosing solutions for almost any application and world-wide distribution. Our in-house resources, decennia of experience and fundamental knowledge of weighing principles, create win-win solutions with proven sustainable return on investment.

The ever increasing cost of materials, growing stringent environmental regulations, consistent quality requirements and necessity of track and traceability at any given point in the process, insist that manufacturers pay more attention to quality conformity.

PENKO, a Dutch engineering company situated in the heart of the Netherlands, specializes in developing exactly these solutions. Whether you are looking for a simple stand-alone weighing system or a bespoke process automation solution, PENKO has a comprehensive off the shelf product selection you can rely on.

Customers value the no-nonsense approach of PENKO Engineering and their commitment to solve standard or project based challenging weighing solutions and their self-evident commitment to services excellence.

The product spectrum includes amplifiers, indicators and controllers for high accuracy, high speed weighing and dosing applications for industrial process automation. Complete or sub-assembly units for OEMs or 'one-off' projects are commissioned as a matter of course, implementing best practices and proven standard solutions. A range of ancillary products including load cells & assemblies complete the product range for your one-stop-shop solution provider.

PENKO Engineering B.V. is a fully owned company of ETC Inc. WI, USA



FLEX Range

An elegant solution to distinctive automation processes. The FLEX is an all-in-one apparatus for automatic and non-automatic weighing applications. It has an integrated PLC, a state of the art easy to use touch screen as well as a weighing feature and forms an ideal solution for sophisticated weighing requirements of process automation in any industry. Controlling up to four different high speed weighing processes in a single instrument is just one of the unique features this range of instruments is capable of.

Need to add more complexity to the program? No problem! The FLEX Multi-Channel is expandable with additional I/O devices such as the RIO and RIA range of products.

FLEX and FLEX Multi-Channel can be fully customised to your specification. The FLEX is also available as a controller with standard application programs including Mono-Filler (MFL), Check Weigher (CHK), Belt Weigher (BLT) and Loss in Weight (LIW).

PENKO FLEX MULTI-Channel

www.penko.com/Products/Measuring-Instruments/Controllers



Certified

8 digital inputs, 16 digital outputs

Screen: touch panel

Panel mount instrument

Communication ports: Ethernet, USB, serial and CAN interface,

Communication protocols: Ethernet IP, Modbus TCP/RTU, ASCII, Fins, PENKO Web interface, Printer (plain text/Zebra ZPL)

Alibi memory

Measuring speed: 1600s/s

Weighers: maximum 4; Load cells: maximum 4x4

Passive sense

Free programmable

PENKO G-Cal auto-calibration system

Optional:

- various digital in/output cards
- analogue in/output card
- PROFIBUS communication portal, protocol DP slave
- combination with shunt diode barriers (EEx-ia)

PENKO FLEX

www.penko.com/Products/Measuring-Instruments/Controllers



Certified

16 digital inputs, 20 digital outputs

Screen: touch panel

Panel mount instrument

Communication ports: Ethernet, USB, serial and CAN interface,

Communication protocols: Ethernet IP, Modbus TCP/RTU, ASCII, Fins, PENKO Web interface, Printer (plain text/Zebra ZPL)

Alibi memory

Measuring speed: 1600s/s

Load cells: maximum 4

Active sense

Free programmable

Standard application software: MFL, CHK, BLT, LIW

PENKO G-Cal auto-calibration system

Optional:

- various digital in/output cards
- analogue in/output card
- PROFIBUS communication portal, protocol DP slave
- combination with shunt diode barriers (EEx-ia)



Source: PENKO Engineering B.V.

REMOTE I/O Devices

Input and output devices offer a cohesive extension to the FLEX and FLEX Multi-Channel weighing controllers. The additional I/O device gives the existing compact system an additional boost to handle complex and sophisticated weighing processes.

RIO Remote Digital I/O

www.penko.com/Products/Measuring-Instruments/Amplifiers-Digitizers



8 digital inputs, 8 digital outputs

Display shows the status of the inputs and outputs

(DIN) rail mounting

Universal, compact and remote

Easy to connect

Addition to: PENKO controller FLEX, FLEX Multi-Channel

Up to 4 RIO's and 1 RIA can be connected to FLEX / FLEX Multi-Channel

RIA Remote Analog I/O

www.penko.com/Products/Measuring-Instruments/Amplifiers-Digitizers



4 analogue inputs, 2 analogue outputs

Display shows the status of the inputs and outputs

(DIN) rail mounting

Universal, compact and remote

Easy to connect

Addition to: PENKO controller FLEX, FLEX Multi-Channel

Up to 4 RIO's and 1 RIA can be connected to FLEX / FLEX Multi-Channel



Source: Daavision B.V.

FLEX2100

When no more than 8 digital in- and outputs are required, the FLEX2100 is a perfect cost effective solution. It is the ideal fit for smaller scale automated weighing processes.

The FLEX2100 controller is available with standard application programs including Mono-Filler (MFL), Check Weigher (CHK), Belt Weigher (BLT) and Loss in Weight (LIW). These application programs can be adapted to your requirements. A fully customised program to your specifications is also possible.

PENKO FLEX2100

www.penko.com/Products/Measuring-Instruments/Controllers



Certified

8 digital inputs, 8 digital outputs

Screen: touch panel

Panel mount instrument

Communication ports: Ethernet, USB, serial and CAN-interface

Communication protocols: Ethernet IP, Modbus TCP/RTU, ASCII, Fins, PENKO Web interface, Printer (plain text/Zebra ZPL)

Alibi memory

Measuring speed: 1600s/s

Load cells : 8 maximum

Passive sense

Free programmable

Standard application software: MFL, CHK, BLT, LIW

PENKO G-Cal auto-calibration system

Optional:

- analogue output
- PROFIBUS communication portal, protocol DP slave

PENKO FLEX2100 Stainless Steel

www.penko.com/Products/Measuring-Instruments/Controllers



Certified

8 digital inputs, 8 digital outputs

Screen: touch panel

Desktop / wall mounted stainless steel instrument

Communication ports: Ethernet, USB, serial and CAN-interface

Communication protocols: Ethernet IP, Modbus TCP/RTU, ASCII, Fins, PENKO Web interface, Printer (plain text/Zebra ZPL)

Alibi memory

Measuring speed: 1600s/s

Load cells : 8 maximum

Passive sense

Free programmable

Standard application software MFL, CHK, BLT, LIW

PENKO G-Cal auto-calibration system

Optional:

- analogue output
- PROFIBUS communication portal, protocol DP slave



COMPACT Instruments

PENKO 1020: The 1020 device is firmly positioned mid-range in the PENKO FLEX and SGM family of indicators and controllers. Whether it is used as an indicator to measure high speed, high accuracy weighing processes or as a pre-programmed controller with standard application software, this compact device will fit almost anywhere.

The 1020 Controller is available with standard application programs: Mono-Filler (MFL), Check Weigher (CHK), Belt Weigher (BLT).

PENKO 960: Down to basics without “bells and whistles” this device is simple yet highly reliable and accurate. It is rendered extremely useful for platform weighing and applications that require only elementary technology.

PENKO 1020 RANGE



www.penko.com/Products/Measuring-Instruments/Indicators

Certified

3 digital inputs, 4 digital outputs

Panel mount instrument

Communication ports: USB and Ethernet

Communication protocols: Ethernet IP, Modbus TCP/RTU, ASCII, Fins, PENKO Web interface, Printer (plain text/Zebra ZPL)

Alibi memory

Measuring speed: 1600 s/s

Load cells: 8 maximum

Passive sense

Controller versions: MFL, CHK, BLT

PENKO G-Cal auto-calibration system

Optional: • Serial communication • CAN interface • PROFIBUS-DP
• analogue output

PENKO 1020 STAINLESS STEEL RANGE



www.penko.com/Products/Measuring-Instruments/Indicators

Certified

3 digital inputs, 4 digital outputs

Desktop / wall mounted stainless steel instrument

Communication ports: USB and Ethernet

Communication protocols: Ethernet IP, Modbus TCP/RTU, ASCII, Fins, PENKO Web interface, Printer (plain text/Zebra ZPL)

Alibi memory

Measuring speed: 1600 s/s

Load cells: 8 maximum

Passive sense

Controller versions: MFL, CHK, BLT

PENKO G-Cal auto-calibration system

Optional: • Serial communication • CAN interface • PROFIBUS-DP
• analogue output

PENKO 960 INDICATOR



www.penko.com/Products/Measuring-Instruments/Indicators

Output RS232

6 digital inputs, 2 digital outputs

Measuring speed: 15 s/s

Load cells: 8 maximum

Tally counter

Passive sense



PENKO Force Instrument Applications

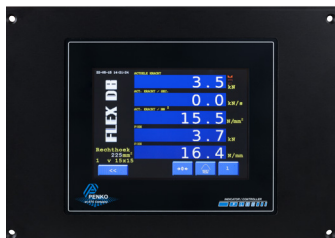
Force measuring means measuring a certain load in Newton independent of gravity. It is most commonly done as part of the safety system or as part of the (product) quality control system. It is also used in R&D, during the manufacturing process or during the installation, testing and use of a product.

The two most common applications are:

- Checking material for stress/strain or fatigue characteristics.
- Checking the machine or product performance.

FLEX2100 Force

www.penko.com/Products/Measuring-Instruments/Controllers



8 digital inputs, 8 digital outputs

Panel mount or desktop / wall mounted stainless steel instrument

Communication portals: USB & Ethernet

Communication protocols: Ethernet-IP, Modbus TCP/RTU, ASCII, Fins, PENKO Web interface, Printer (plain text/Zebra ZPL)

Alibi memory

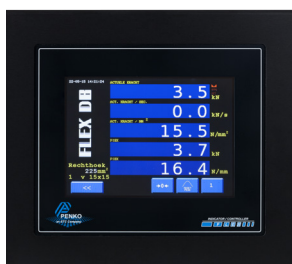
Measuring speed: 1600s/s

2 force measuring range

Optional: • analogue output
• Profibus-DP communication portal, protocol DP slave

FLEX Force

www.penko.com/Products/Measuring-Instruments/Controllers



16 digital inputs, 20 digital outputs

Panel mount instrument

Communication portals: USB & Ethernet

Communication protocols: Ethernet-IP, Modbus TCP/RTU, ASCII, Fins, PENKO Web interface, Printer (plain text/Zebra ZPL)

Alibi memory

Measuring speed: 1600s/s

2 force measuring range

Optional: • analogue output
• Profibus-DP communication portal, protocol DP slave

PENKO 1020 FMD

www.penko.com/Products/Measuring-Instruments/Controllers



3 digital inputs, 4 digital outputs

Panel mount or desktop / wall mounted stainless steel instrument

Communication portals: USB & Ethernet

Communication protocols: Ethernet-IP, Modbus TCP/RTU, ASCII, Fins, PENKO Web interface, Printer (plain text/Zebra ZPL)

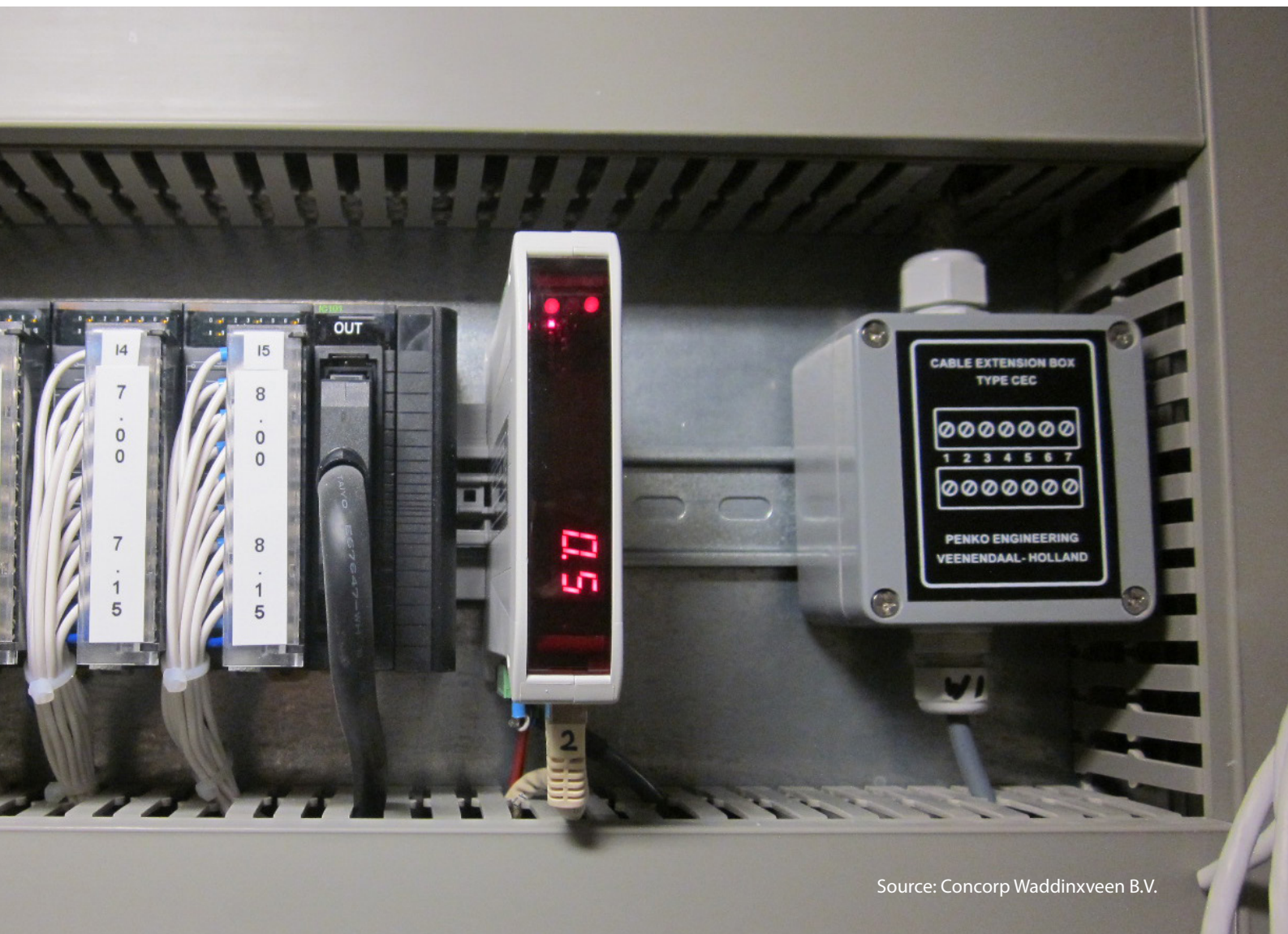
Trend indication readout value (TIR) function

Alibi memory

Measuring speed: 1600s/s

1 force measuring range

Optional: • analogue output • serial communication
• CAN interface • Profibus-DP



Source: Concorp Waddinxveen B.V.

SGM Range

There is no easier way of transforming a strain gauge load cell signal to a digital output signal while operating with high speeds of 1600 samples per second and pairing this to a PLC. Simply add the weighing module to your system and forget about programming the application.

The certified SGM800 Range is also available as a mini-controller with standard application programs Mono-Filler (MFL), Check Weigher (CHK), Belt Weigher (BLT).

PENKO SGM800 RANGE

www.penko.com/Products/Measuring-Instruments



Certified

For general purpose weighing and dosing applications

Communication protocol: Ethernet IP, Modbus TCP/RTU, ASCII, Fins, PENKO Web interface, Printer (plain text/Zebra ZPL)

Alibi memory

SGM810: 0/4 – 20/24 mA

SGM820: Ethernet, analogue output

SGM830: CAN-bus, analogue output

SGM840: Profibus, analogue output

SGM850: RS232/422, analogue output

Measuring speed: 1600s/s

Load cells: 8 maximum

Standard application software: MFL, CHK, BLT

(DIN) rail mounting

All versions include: PENKO G-Cal auto-calibration system

Optional: • PROFINET on request.

PENKO SGM700 RANGE

www.penko.com/Products/Measuring-Instruments



For general purpose weighing and dosing applications

Communication protocol: Ethernet IP, Modbus TCP/RTU, ASCII, Fins, PENKO Web interface, Printer (plain text/Zebra ZPL)

Alibi memory

SGM710: 0/4 – 20/24 mA

SGM720: Ethernet

SGM730: CAN-bus

SGM740: Profibus

SGM750: RS232/422

Measuring speed: 1600s/s

Load cells: 8 maximum

(DIN) rail mounting

All versions include: PENKO G-Cal auto-calibration system

Optional: • analogue output, except for SGM710
• PROFINET on request.



EU-800d

This robust housing, in die-cast aluminium, is finished with a caustic and acid-resistant paint, making this instrument ready for use in all branches of industry. Thanks to PENKO's specialty, its high measurement speed (1600 conversions/s), combined with a high internal resolution (24 bit), a fast and accurate measurement is assured. These features make the instrument suitable for static and dynamic measurements and fast applications such as filling and check weighing in harsh environments. For the read-out clear; 8 mm high, LED's are used. The control buttons, zero, tare etc, are activated by means of smart sensor on the touch screen.

PENKO EU-800d Indicator

www.penko.com/Products/Measuring-Instruments



3 digital inputs, 4 digital outputs

Wall mounted instrument

Operation through infra red buttons

Communication ports: USB

Communication protocols: Modbus ASCII/RTU, PENKO ASCII, PENKO TD/PDI, Printer (plain text/Zebra ZPL)

Measuring speed: 1600 s/s

Load cells: 8 maximum

Passive sense

PENKO G-Cal auto-calibration system

Analogue output

Protection class: IP68



Load Cells, Mounting Kits & Assemblies

A load cell is a sensor “translating” the load or force applied to the sensor into an electrical signal. They are the most widely used load transducers in all areas of weight measurement from retail scales, process industry through to medical applications.

Internationally recognized standards such as defined by the OIML, have greatly influenced the modus operandi of manufacturers worldwide.

Load cells are based on a strain gauge principle and cover ranges from 0 to 0.3kg full-scale deflection up to 0 to 600,000 kg with accuracy classifications from 0.1% to 0.015%. On request the majority of load cells can be supplied with a certificate for trade applications. More loadcells and mounting kids on request.

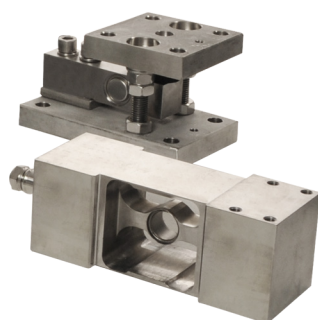
Load Cells

PENKO Engineering B.V. stocks the most commonly industrial applied load cells in various capacities for off-the-shelf immediate delivery. Specials are available on request.



Load Cell Types

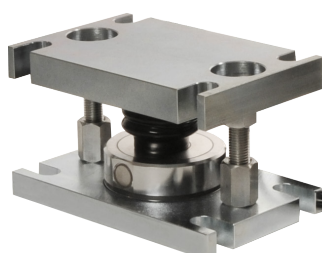
www.penko.com/Products/Load-Cells



Single Point	Aluminium - Alloy steel - Stainless Steel
Shear Beam	Alloy steel - Stainless Steel
Bending Beam	Stainless Steel
Planar Beam	Aluminium
Hydraulically - Damped	Aluminium - Alloy steel - Stainless Steel
Tension Load Cells	Aluminium - Alloy steel - Stainless Steel
Double Ended Shear Beam	Alloy steel - Stainless Steel
Compression - Column	Alloy steel - Stainless Steel
Special Purpose	Alloy steel
Torque Ring	Stainless Steel

Mounts & Assemblies

www.penko.com/Products/Load-Cell-Accessories/Mounting-assemblies



Mounting assemblies for: Bending beams, Shear beams, Planar beams, Tension load, Double ended Shear beams, Column Torque ring
Material: stainless steel, alloy steel, aluminium
Silent blocks
T-end feet



Load Cell Accessories

Load cell accessories come in handy for an all-round complete weighing system, however determining the relevant and appropriate equipment can be a challenge. Not only does PENKO supply all required accessories, but stand at the ready to assist with the decision on appropriate equipment needed such as load cell cables, mounting and kits & load cell combinations, cable extensions, printers, connectors, weights etc.

SIGMA4

The SIGMA4 is an "intelligent" load cell cable junction box. During a test the system, the junction box and the indicator measures the load cell output per sensor and determines if this is correct. A faulty load cell can be switched off. This way the measuring system can operate with fewer sensors for the time being. The advantage is that during testing the faulty load cell is immediately recognized as well as its deviation. Furthermore this module supports TEDS (Transducer Electronic Data Sheet), which means that sensor specific information is available and can be compared, this facilitates automatic re-justification. As an extra, the instrument optionally stores all calibration data in the PC program Pi.

SIGMA4

www.penko.com/Products/Electrical-Accessories



Connection box for up to 4 load cells

Automatic fault finding

Supports TEDS

To be used in combination with PENKO1020

Backup and restore of calibration data

Reduce down time

Enclosure: stainless steel, 4 cable glands for loadcells 1 cable glands for indicator

Protection class IP65

Junction Box

www.penko.com/Products/Electrical-Accessories



Connection box for up to 4 load cells

Screw connection

Potentiometers

Enclosure: reinforced fiberglass polyester, 5 cable glands

Protection class IP65

Optional: ATEX certification

Extension Box

www.penko.com/Products/Electrical-Accessories



Used for extending load cell cable

Enclosure: reinforced fiberglass polyester, 2 cable glands

Protection class IP65

Optional: ATEX certification

Cables

www.penko.com/Products/Electrical-Accessories/Load-Cell-Connection-Accessories



Load cell cable, 6-wired

Shielded

PENKO recommends power supply cables. Please see website for details.

LCS-3

www.penko.com/Products/Electrical-Accessories



Particularly useful in a test environment

Simulates load cell signal of a weigher with up to 4 load cells



Source: PENKO Engineering B.V.

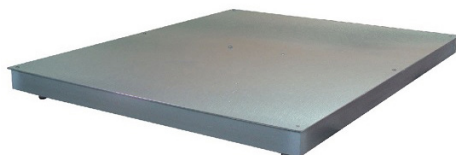
Platforms

PENKO offers industrial platforms with dimensions ranging from 150 mm x 150 mm up to 4m x 1,5m and weighing capacities from 0 – 3 kg up to 0 – 6.000 kg. The finish options include stainless steel and alloy steel. Custom made platforms of any size and weighing capacity can be designed and manufactured to client specification.

On the next page, a selection of our weighing platforms is shown. The sizes are guides; non standard sizes can be made to order. For more information: visit www.penko.com/platforms.

Giropès Platforms

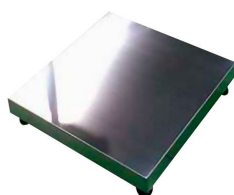
www.penko.com/Platforms



B4C Range	Alloy Steel, Stainless Steel Dimensions: 800 x 800 mm up to 4000 x 1500 mm Capacities: 0 – 300 kg up to 0 – 6.000 kg
BEP Ranges	Alloy Steel, Stainless Steel Dimensions: 1200 x 1000 mm up to 2000 x 1500 mm, 2500 x 1500 mm up to 4000 x 1500 mm Capacities: 0 – 300 kg up to 0 – 6.000 kg
BMC Range	Alloy Steel, Stainless Steel Frames & Cover Dimensions: 300 x 300 mm up to 800 x 800mm Capacities: 0 – 3 kg up to 0 – 600 kg
BPP Range	Stainless Steel Dimensions: from 300 x 3000 mm Capacities: 0 – 300 kg up to 0 – 3.000 kg

Ascell Platforms

www.penko.com/Platforms



M-MI Range	Alloy Steel, Stainless Steel Dimensions: 150 x 150 mm up to 800 x 800 mm Capacities: 0 – 3 kg up to 0 – 1.000 kg
S-SI-Range	Alloy Steel, Stainless Steel Dimensions: 800 x 800 mm, up to 500 x 1500 mm. Capacity: 0 – 300 kg up to 0 – 3.000 kg
PTC Range	Coated Alloy Steel, Stainless Steel Top Dimensions: 800 x 800 mm up to 2000 x 1500 mm Capacities: 0 – 3 kg up to 0 – 3.000 kg
WPL Range	Stainless Steel Dimensions: 800 x 800 mm up to 2000 x 1500 mm Capacities: 0 – 3 kg up to 0 – 3.000 kg

Turier Heavy duty platforms

www.penko.com/Platforms



1540	Mild steel/Stainless Steel Top, Stainless Steel Dimensions: 205 x 205 mm up to 705 x 605mm. Capacity: 3– 15 kg up to 50 – 300 kg
1530	Mild Steel, Stainless Steel Dimensions: 800 x 800 mm up to 3000 x 3000 mm. Capacity Mild Steel, : 300– up to 10.000 kg. Capacity Stainless Steel 300 - 6.000 kg
1530 Drive Thru	Mild Steel Dimensions: 800 x 800 mm up to 1.500 x 1.500 mm Capacities: 300 kg up to 1.500kg



Source: Van Duijnen Horeca Service BV

Software

Software is the intelligence of PENKO instruments. In addition to standard loaded software, your specific software can be custom made to assist with set-up of controller communication and provide statistical and management data.

The PENKO website offers a number of free downloadable software applicable to most in-house developed systems. The software allows controller communication, data analysis and data management.

For bespoke developments contact PENKO Engineering via info@penko.com or +31 (0)318 525 630.

BCS

www.penko.com/Software



Your technical department is responsible for a smooth operation of your production equipment. BCS helps to make this job easy by providing an actual overview of all settings, control status and feedback, etc.

Weighing Accuracy Calculator

www.penko.com/Software



The weighing accuracy tool helps you to choose the correct load cell for the job. This is a free downloadable program.

Pi Mach II

www.penko.com/Software



Pi Mach II is a comprehensive freeware program for monitoring configuration and programming a PENKO device. Available features include firmware update manager, management and tool for parameters, oscilloscope functionality to explore filters as well as programming and visualization tools for the FLEX range. USB drivers are included in the installer.

Job Manager XE

www.penko.com/Software



Job Manager freeware, an additional software to Pi Mach II, assists in organize custom made programs for FLEX Range.

PDI Client

www.penko.com/Software



PDI Client allows you to configure PENKO devices through several communications ports such as Ethernet IP, USB or html.

PENKO USB Drivers

www.penko.com/Software



USB drivers are available for all products.

Data -Reporter

www.penko.com/Software



Data-Reporter enables import and export of data to and from a PENKO controller. It stores the data on a PC hard disk in a .csv format.

E-Marking

www.penko.com/Software



In conjunction with a PENKO controller the certified e-marking software program offers efficient and cost saving dosing according to regulations of the European Directive for trade.



Source: PENKO Engineering B.V.

Experienced Research & Development

Our experienced and committed R&D team is compelled to develop new products and is charged with creating innovative and competitively priced instruments to meet the ever evolving demands for innovation on modern industrial processes. All PENKO instruments are developed, manufactured, and tested in-house and certified by independent expert and government organisations to ensure they meet or exceed metrology industry guidelines. A library of test certificates is available at www.penko.com/publications.

Custom projects

PENKO Engineering B.V. assembles product components into custom made systems. We design and build 'one-off' custom products on a project basis and work closely with industrial users to ensure that products are developed and modified in accordance with customer specifications.

Professional Services

PENKO is committed to ensure every system is installed, tested, programmed, commissioned and operational to client specifications. Our engineers, at our weighing center in Ede, The Netherlands, as well as our distributors around the world, strive to solve most weighing-system issues within the same day.

Process Automation

Management Information Systems are valuable for managing product recipes, develop production orders, inventory tracking, finished goods management and track & tracing, to name but a few benefits.

Weighing and dosing systems offer optimal control of processes. The high sampling rate and high internal resolution make the instruments ideal for high accuracy and high speed industrial use. Various designs, single- and multi-channel, with various forms of communication, offer a selection of options suitable for most environments. If needed, the control concept can be enhanced by PLCs and HMIs.

Industrial load cells are delivered in aluminum, steel or stainless steel, protection classes up to IP68 and EEx-ia safety features making them suitable for all operating conditions. The measurement ranges from 0.3 kg to 600 tons per sensor and holds an accuracy up to and including C6, 0.0083%.

Fully engineered control panels of any size, distributions up to and including 1600 A, are delivered in painted or stainless steel and include motor switches, electronic speed controllers, control valves etc.

Specialized e-mark software tools guide the filling of produce and delivery of finished goods in accordance with the Metrology Act and EU regulations.

Before



A skilled sales representative is highly motivated to ensure customers obtain the appropriate equipment to do the job. Trust and dedication to deliver a suitable solution, drives customer satisfaction.

During



Professional supervision of the installation, including calibration, proto-typing and test runs are of paramount importance to ensure the desired outcome.

After



Service Level Agreements, are formally defined in PENKO's Service Contracts ensuring uninterrupted continuation of processes.



Source: Kelderman Bouw

Certifications

PENKO sets high standards for its products and product performance to ensure they meet - and even - exceed metrology industry guidelines. PENKO is ISO9001 certified, giving our long term quality work the official stamp of approval. Additional certificates are available on: www.penko.com

PENKO is a member of the Association of Dutch Suppliers of Weighing Equipment (VLW) and represented in the European Weighing Association (CECIP).



Agentschap Telecom
Ministerie van Economische Zaken



PENKO global representation

Australia
WARD MATERIAL HANDLING
SOLUTIONS Pty Ltd.
21 Caramar Avenue
Melbourne, Victoria 3187
Australia
Tel: +61 3 95027705
Fax: +61 3 95027705
<http://www.wardmhs.com.au>

Bangladesh
PROCESS AUTOMATION Ltd.
Ahmed Plaze (2nd floor)
Shewrapara, Mirpur, Dhaka, 1216
Bangladesh
Tel: +880 2 8032482
Fax: +880 2 9009570

Brazil
RCO INDUSTRIA E
COMERCIO LTDA
Avenida José Gatto 1274 Jardim
Elitte
Tambaú, CEP 13710-000
Brazil
Tel: +55 (19) 3673-9393
Fax: +55 (19) 3673-9393
<http://www.rco.ind.br>

Czech Republic
UTILCELL s.r.o.
nám. V. Mrštika 40
Ostrovačice Brno, 664 81
Czech Republic
Tel: +420 546427053, 546427059
Fax: +420 546427212
<http://www.utilcell.com>

China
BEIJING AVENUE
North Fourth Ring Road Chaoyang
District, Beijing International Center
Room 2011 Olympic World
Beijing,
China
Tel: 86+10-84-351-216
Fax: 86+10-84-351-218
<http://www.beying-avenue.com>

**SHENZHEN MINREN
TECHNOLOGY Co Ltd**
Room 608, 6th floor, Block B,
Longhau Str, Port Bus. Long
Longhua District Heping East Road
Guangdong Shenzhen
China
Tel: 86+755-28188399
Fax: 86+755-26524665
<http://www.szminren.com>

Denmark
DAN-TRANSDUCERS ApS.
Fiskerengen 5
Gilleleje, 3250
Denmark
Tel: +45 48224402
Fax: +45 48224406
<http://www.dan-transducer.com>

Egypt
HI-TEK ENGINEERING
6th of October City
2nd Ind. Zone Street #84
PO Box 81, 12515 Egypt
Tel: +20 2 3 833 6078/79
Fax: +20 2 3 833 5565
<http://www.hitekeng.com>

Finland
KNORRING OY AB
Mestarintie 4
01730 VANTAA
Finland
Tel: +358956041
Fax: +35895652463
<http://www.knorrng.fi>

France
KISTLER FRANCE
15, Avenue du Hoggar Za de
Courtaboeuf
Les Ulis, 91953
France
Tel: +33169188181
Fax: +33169188189
<http://www.kistler.fr>

ADN Pesage
Parc d'activités de la Forêt 26,
Allée du Clos des Charmes
Collégien, 77090
France
Tel: +33148630076
<http://www.adnpesage.fr>

Germany
PENKO Engineering B.V.
Schutterweg 35
6718 XC EDE
The Netherlands
Tel: +31 318525630
Fax: +31 318525971
<http://www.penko.com>

India
JAY INSTRUMENTS & SYSTEMS
Pvt. Ltd.
E-16, Everest Building, Tardeo
Road,
Mumbai, 400034
India
Tel: 91-22-23526207
Fax: 91-22-23526210
<http://www.jayinst.com>

The Netherlands
PENKO Engineering B.V.
Schutterweg 35
6718 XC EDE
The Netherlands
Tel: +31 318525630
Fax: +31 318525971
<http://www.penko.com>

Norway
AVANTI ENGINEERING A.S.
Midtre gate 10
Mo I Rana, 8624
Norway
Tel: 0047-75 12 99 50
Fax: 0047-75 12 99 51
<http://www.avantieng.no>

Poland
INTERPROCESS
ul. 29 Listopada 10
Warszawa, 00-467
Poland
Tel: +48 694 956 656
Fax: +48 22 350 66 80
<http://www.interprocess.pl>

Portugal
N. BELCHIOR Lda.
Rua da Granja, 10 D,
Boa Vista Leiria,
Portugal
Tel: +351244850920
Fax: +351244814664

Singapore
GOLDBELL WEIGHING-SYSTEM
pte ltd
23 Kaki Bukit Road 4, 01-14
Synergy@KB
Singapore, 417801
Singapore
Tel: +65 62936888
Fax: +65 62932576
<http://www.goldbellweigh.com>

Slovakia
LIBRA sro
Kvetinárska 31
Bratislava, 826 12
Slovakia
Tel: +421 2 4552 01 23
<http://www.libra-vahy.sk>

South Africa
WEIGHING & CONTROL
EQUIPMENT
Sa 6001 44 Hart Street.
Port Elizabeth,
South Africa
Tel: +27414532187
Fax: +27414534889

Spain
IBERFLUID INSTRUMENTS S.A.
E 08028 Cardenal Reig. 12.
Barcelona ,
Spain
Tel: +34933333600
Fax: +34933340524
<http://www.iberfluid.com>

Sweden
SCANVAEGT AB
Scanvaegt Systems AB
Verkstadsgratan 4
SE-233 51 Svedala
Tel: +4640 40 50 00
<http://www.scanvaegt.se>

Turkey
PANEL TEKNİK
Kordonboyu mah.Kumlar cad.
No:30B
Kartal-İstanbul, 34862
Turkey
Tel: +90-216-4731404
Fax: +90-216-4731253
<http://www.panelteknik.com.tr>

United Kingdom
SENSOR TECHNIQUES LIMITED
21G Vale Business Park
Cowbridge Wales, CF71 7PF
United Kingdom
Tel: +44 1446771185
Fax: +44 1446771186
<http://www.loadcells.com/>

United States of America
POWERFORCE LLC
Dunavant Dr 229 Blount
Rockford, 37853-3065
United States
Tel: +865 609 0700
Fax: +865 609 8016
<http://www.powerforceusa.com/>

Vietnam
FA VIET NAM TECHNOLOGY &
TRADING COMPANY Ltd
Street No. 5, Grp. 5, Truong Tho
Ward Thu Doc District 25/15
Ho Chi Minh City ,
Viet Nam
Tel: +84 (0) 83225770
Fax: +84 (0) 83225770
www.fa-vietnam.com

