

IMPROVING THE FUTURE OF FISHING



1902

Louis-Alexandre MORGÈRE decided to settle in SAINT MALO.

His marine forge produced the fittings and equipment for the challenging conditions in which the “Terre-Neuvas”, newfoundland fishers, needed to fish the banks.



1960 – 1962

A turning point in the history of MORGÈRE.

The company decided to specialise in the design and manufacture of trawl doors, creating a new world standard for quality and efficiency.

The first model was a flat oval door with a bracket. This egg shape was an adaptation of Russian design.

These oval trawl doors turned out to be a great success and the export market opened up, beginning with Spain.



OUR PREMISES



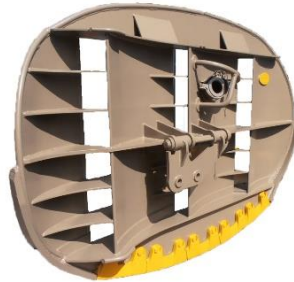
Building surface: **2 500 m²**

OUR PREMISES



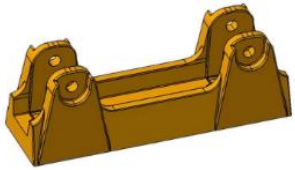
OUR RANGE OF DOORS

Our trawl doors are developed to fulfil our customers' requirement for equipment ever more economical (reduced fuel consumption) and efficient (increased opening of the trawl).



OTHER PRODUCTS

Shoes



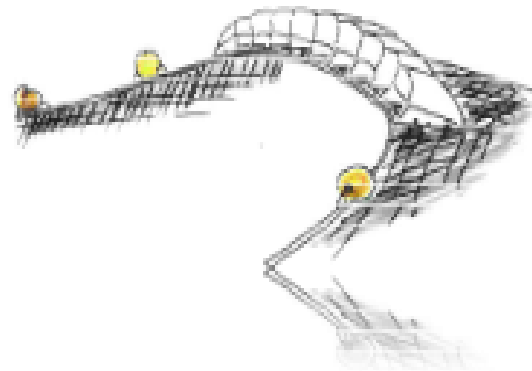
Clumps



Fittings



Kite

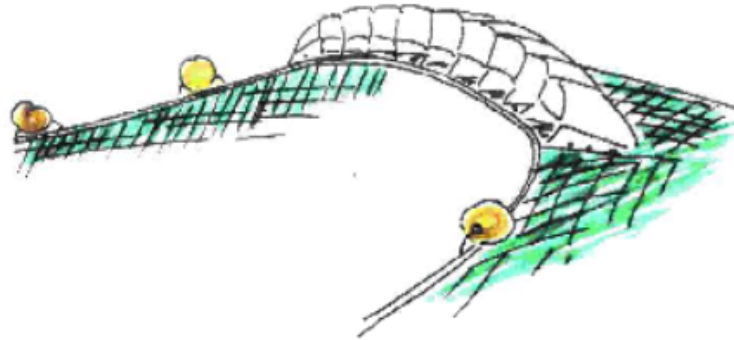


Pair trawling





AÉROPLANE (Patented Worldwide)



This flexible kite (made in canvas coated with PVC) can be used with bottom or midwater trawls.

Positioned on small meshes netting in the middle of the headline, one "Aéroplane"® Standard (1.50 m) is doing the same job than 35 floats (200 mm) at 3.5 knots, 45 floats (200 mm) at 4 knots...

Flexible, the aeroplane can be stored on the net drum.

The aeroplane is usually delivered in 5 sizes : 0.80 meters, 1.50 m, 3 m, 4 m ("Maxi") and 6 m ("Monster").

Speed :	3 knots		3,5 knots		4 knots		4,5 knots		5 knots	
Type	Lift effect	Drag effect	Lift effect	Drag effect	Lift effect	Drag effect	Lift effect	Drag effect	Lift effect	Drag effect
0,8 metre	52 kg	17 kg	71 kg	23 kg	93 kg	30 kg	118 kg	38 kg	148 kg	48 kg
1,5 metre	98 kg	31 kg	134 kg	43 kg	175 kg	56 kg	221 kg	70 kg	273 kg	87 kg
2 metres	131 kg	42 kg	179 kg	57 kg	233 kg	74 kg	295 kg	94 kg	384 kg	116 kg
3 metres	197 kg	63 kg	268 kg	85 kg	350 kg	111 kg	443 kg	141 kg	548 kg	174 kg
4 metres (Maxi)	437 kg	139 kg	595 kg	189 kg	777 kg	247 kg	984 kg	313 kg	1 214 kg	386 kg
6 metres (Monster)	885 kg	282 kg	1 205 kg	383 kg	1 574 kg	501 kg	1 992 kg	634 kg	2 459 kg	782 kg



OUR VALUES

Availability

Listening to you, advising and working together to optimise the performance / running cost of your business.

Responsiveness

To minimise the down time of your ship.

Quality

Well-finished products meeting your expectations and reducing operating costs (fuel and maintenance costs).

Innovation

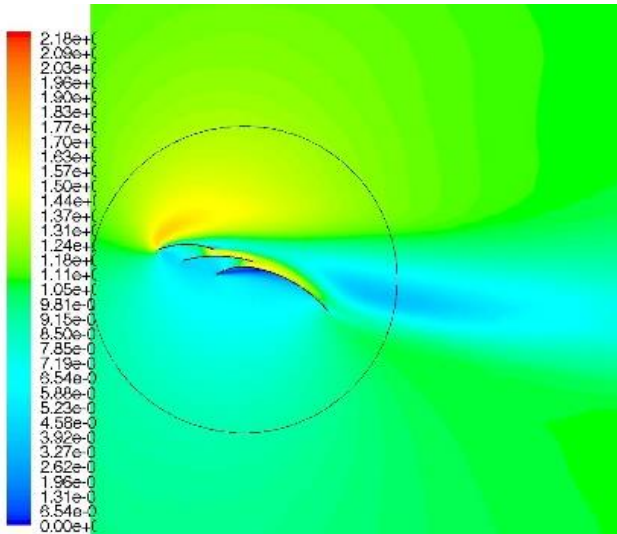
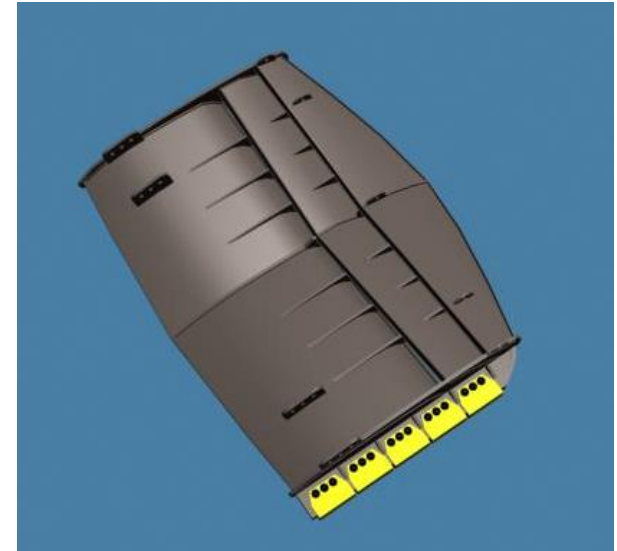
Working towards a future for fishing that is more efficient, economical and environmentally sound.

Research and development is conducted in partnership with local research centers in order to reduce the impact on marine environment.

Our design office is equipped with the latest version of CAO SolidWorks software and works in conjunction with IFREMER (calculation and tanks tests).

IFREMER is a french research institute, specialising in sea exploration, and therefore a skilled partner.

Of course, MORGÈRE carries out offshores tests in real conditions to validate prototypes and ensure that our products meet our customers' requirements.



KEY EVENTS



1973

MORGÈRE trawl doors took the place of honour at the World Fishing Exhibition in Vigo, Spain: two Polyvalent doors were sited above the main entrance to the hall: representing the rear of a modern trawler.



2022

MORGÈRE is back at the place of honour at the World Fishing Exhibition in Vigo, Spain. The Exocet new trawl door was sited next to the main entrance.



MORGÈRE

Opening trawls since 1902